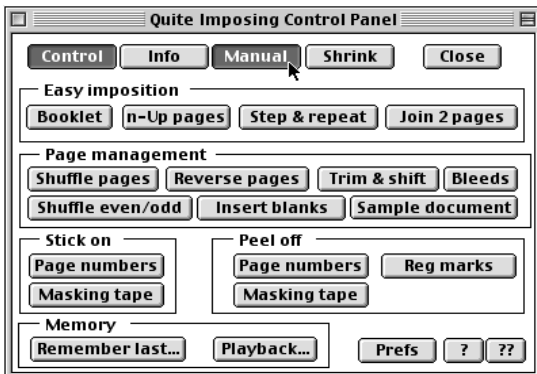


DUTCH CUT LAYOUT



- 1) Open your PDF Document

In this Example of a Dutch CUT LAYOUT I have opened an 6" x 11" document which I would like to place (Gang) on the same sheet. Final output to be printed on an 12.5" x 18" sheet and then cut.

- 2) To access Quite Imposing Plus, simply select **► Plug-Ins** and then **► Quite Imposing Plus** from Acrobat's Menu bar. Alternately, selecting **► Plug-Ins** from the Menu bar then **► Quite Imposing Plus ► Imposition control panel** as shown here.

- 3) Click **Manual Imposition...** button. *A dialog box will appear.*

In this Example you need to pick a Target sheet (This lets you set what size sheet your outputting on)

- 4) Click **Change target...** button to continue *A dialog box will appear.*

In this Example I have selected

- Create a new document with 1 blank sheet
I've selected 12.5" x 18" from the pop-up

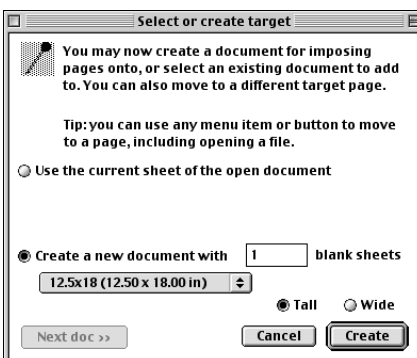
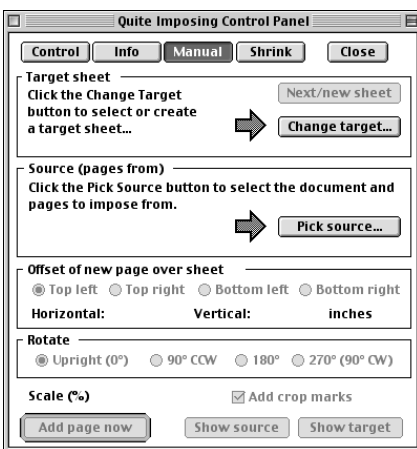
Note: If you don't have 12.5" x 18" created it's easy to do.

*Select **More choices...** from the pop-up.*

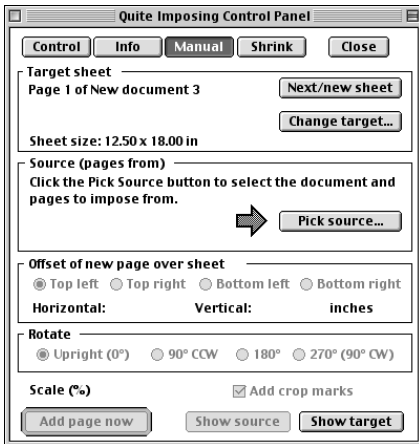
- Define a new custom size for blank sheet
Click Next button.

*Now indicate your width 12.5 and height 18
Also good to name it in my example I called it 12.5" x 18" Click OK button it is now added to the list and easy to access.*

- 5) Click **Create** button



DUTCH CUT LAYOUT... Continued



6) Now Click the **Pick source...** button

7) Click **Pick** button

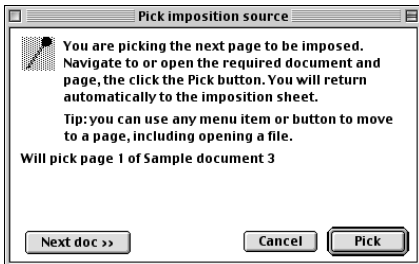
*Note: Click **Next doc** button unless the document is already opened. You should also notice once you do this a highlight color should appear on your final output sheet. Place it where you'd like using controls*

In my Example

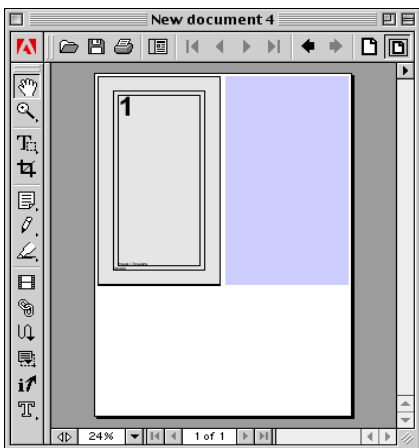
*Offset • Top left Horizontal .125
Vertical .125*

8) Click **Add page now** button

9) Now Click **Pick source...** button, again and pick the same source document. Place it
• Top left Horizontal: 6.375 and Vertical .125
Click **Add page now** button



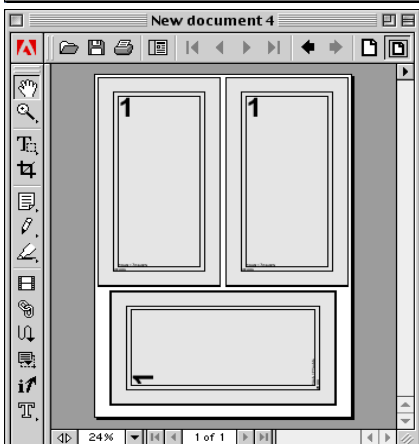
10) The last page the same way except in placement of page is
• Rotate 90 CCW
• Top Left Horizontal .75 Vertical 11.375
Click **Add page now** button



11) Click the **Close** button

Note: You can now see the finished piece.

12) You can now Print or Save your document.



Final Note: If you need any help on setting up your particular signature. Please review our on-line help manual or contact us at help@quite.com

We will be happy to assist you.

– Quite Software Technical Support Team
www.quite.com