

Quite Hot Imposing 5.0

Enfocus Switch related enhancements

Enfocus Switch is a product made by Enfocus to manage workflows. Quite Software do not sell it or support it, but there is integration between Quite Hot Imposing and Enfocus Switch.

Installation note for Enfocus SWITCH users

Enfocus SWITCH will search for a copy of Quite Hot. We have found the following method works for Windows users:

1. Run the version 5 product, then quit.
2. Uninstall version 1/3/4 (or rename its install folder). **Be sure you can reinstall later if needed.**
3. Quit and restart SWITCH.
4. If you want to go back to version 1/3/4, the procedure is the same: reinstall it, run the product once, and restart SWITCH.

Using user variables to pass metadata from Enfocus Switch

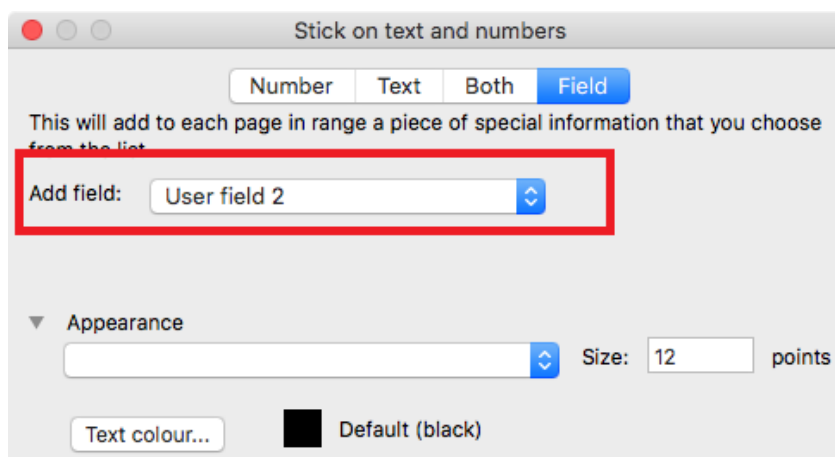
Flows in Enfocus Switch often have complex controls based on metadata and other information. Until now, the only way to control Quite Hot Imposing was to generate references to different control files based on the metadata. Now it is possible to pass user variables into Quite Hot Imposing, which can be used in two commands:

- **Stick on Text and Numbers** can pick up these user fields and place them as text on a page.
- **Conditions** (new in 5.0) can run different automation sequences according to user variables.

Note too that you can now pick up the Switch file name without the five character prefix (e.g. FILE.PDF rather than _XAXAX_FILE.PDF) using the **File name (no prefix)** field.

Picking up user data in Stick On Text And Numbers

Stick On Text and Numbers allows you to select a Field to add. You can select User field 1, 2 or 3 (more names are available, see Advanced Use, below). All the other options for adding text are applicable (e.g. font, position).



Setting up user data for Quite Hot Imposing in Switch

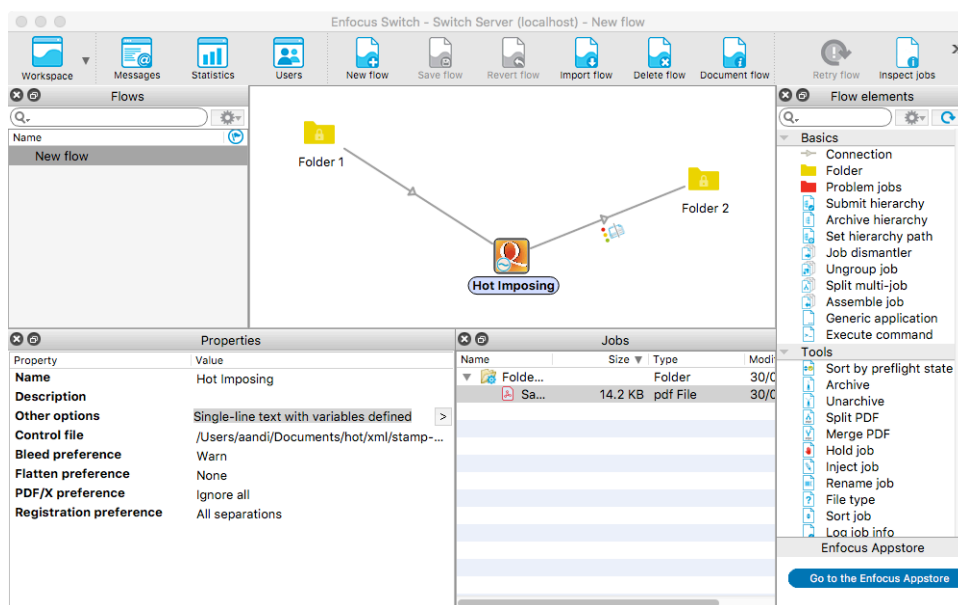
In the Quite Hot Imposing configurator Properties you have a section **Other options**. These are extra command line options passed to Quite Hot Imposing. To work with metadata you will choose *Single-line text with variables defined*.

The eventual result of the text must be to set a `-User:name` field such as `-User:2` for the field called "2" (User field 2 in the screen shot above). This is followed by a space and the value to pass in double quotes.

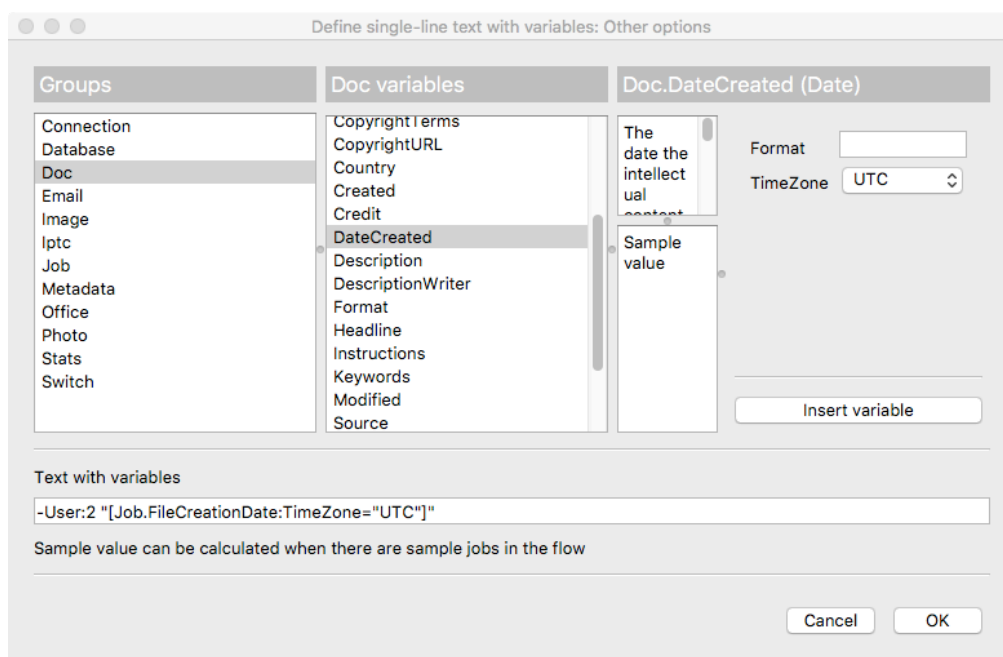
For example, if you just wanted to pass RUSH as User field 2, you would add

```
-User:2 "Rush"
```

Notice that this must start with one dash (-), and there is a space before the value. You can include as many user fields as you like, separated by more spaces. To use names other than 1, 2 or 3, see Advanced Use, below.



When you click the arrow after **Other options** you will see the Switch helper screen



The helper screen lets you choose variables to add to the basic command.

In this example, we first typed `-User:2 "` then selected **Doc** from the **Groups** list and **DateCreated** from the **Doc variables** list.

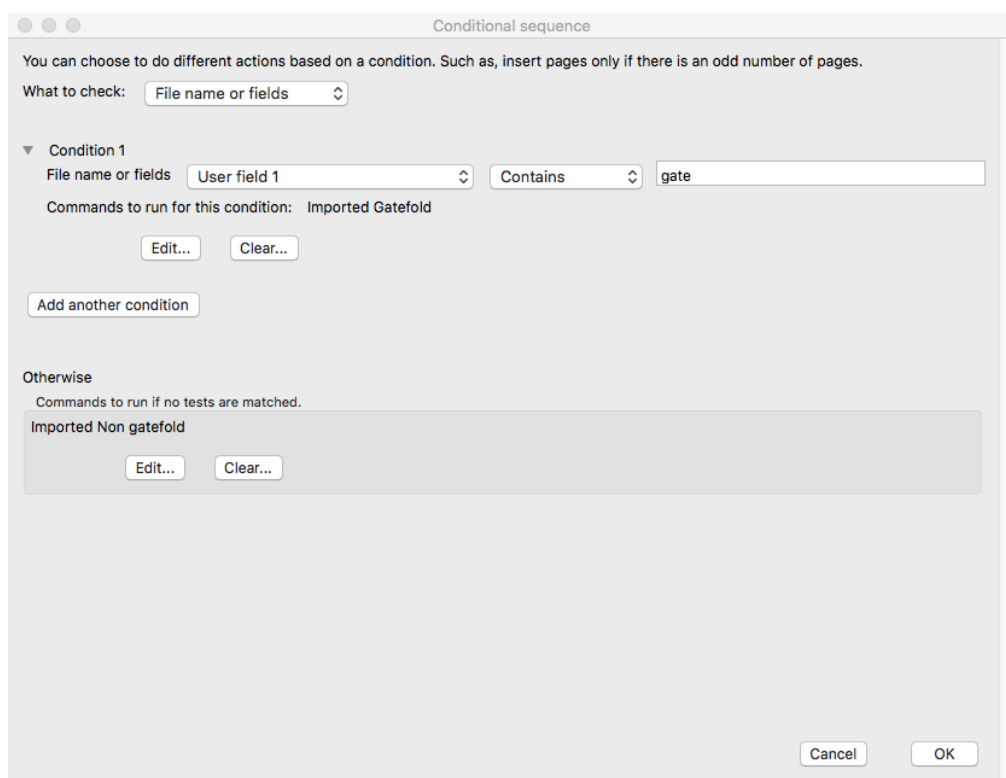
Switch added `[Job.FileCreationDate:TimeZone="UTC"` automatically, and finished by typing another double quote.

Working with Condition commands and user variables

This picture shows a Condition command which looks at user variable "1".

If the variable contains the text "gate", then it will run one set of commands (the imported sequence called "Gatefold").

If the variable is not matched, it runs the *Otherwise* command, which here is the imported sequence called "Non gatefold".

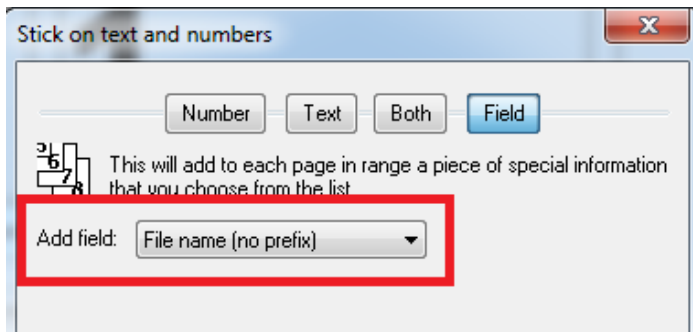


You can add more conditions to test the same or other variables, and run other commands. Note that only one condition will be matched.

File name without prefix

Switch automatically adds a five character prefix to each file name it works with, to be sure the name is unique. The prefix might change a name `FILE.PDF` into `_XAXAX_FILE.PDF`.

Quite Hot Imposing 5.0 includes a new field **File name (no prefix)** which automatically strips the prefix (underscore, five characters, underscore) if it is found. This removes the need to use a user variable for this common case.



Advanced use of field names

You can work with any name for a field. Setting these up in Switch is the same, but in Stick on Text And Numbers you need to select the **Advanced** option and type a field in this form [User:*name*].

If the field is not found, the text [User:*name*] remains as the value. To set a default value, use a vertical bar after the name, for example [User:rush|no] means that if the user field **rush** is not set this will have the value **no**. You can default to blank as in [User:extras|].

To use other fields with the Condition command, select "Choose another (advanced)" from the field list, and type the name in the same format.