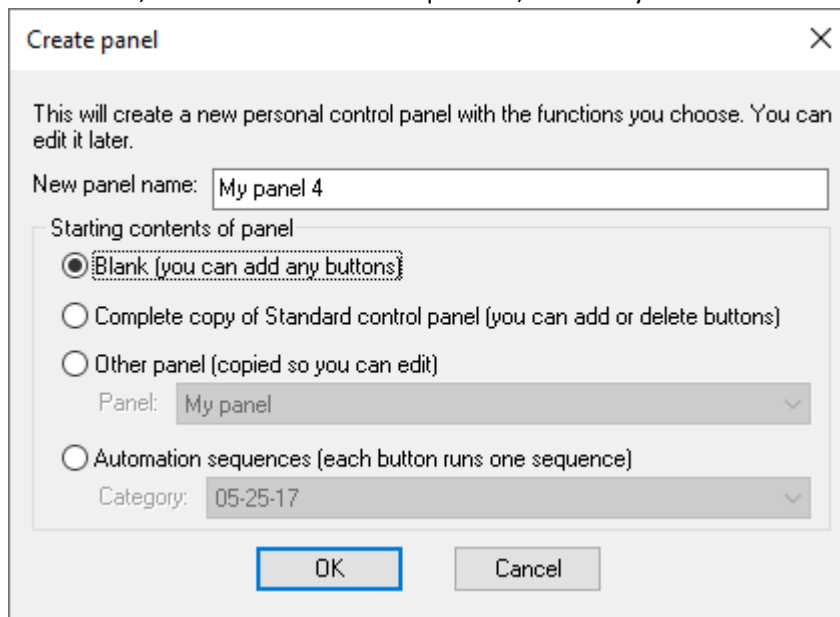


QUITE TECH SHEET

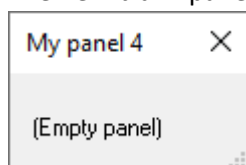
Setting up a custom panel for your favourites

This tech sheet describes how to set up a custom panel in Quite Imposing Plus 5 and later. You can use this to save time, by reducing the need to click in menus.

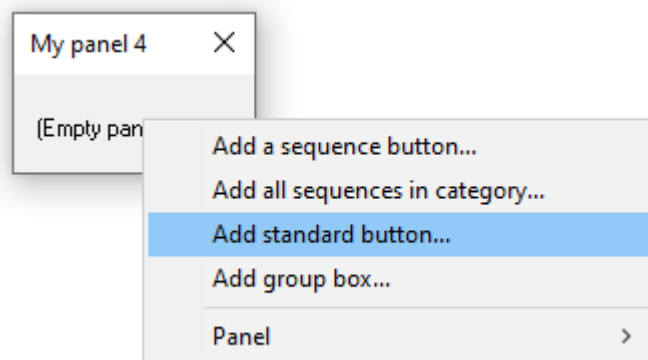
1. Choose **Plug-ins > Quite Imposing Plus 5 > My Panels > New Panel**
2. Now you will see the choices for a panel. It can automatically be filled with all the standard commands, or with automation sequences, but today we start with a blank panel.



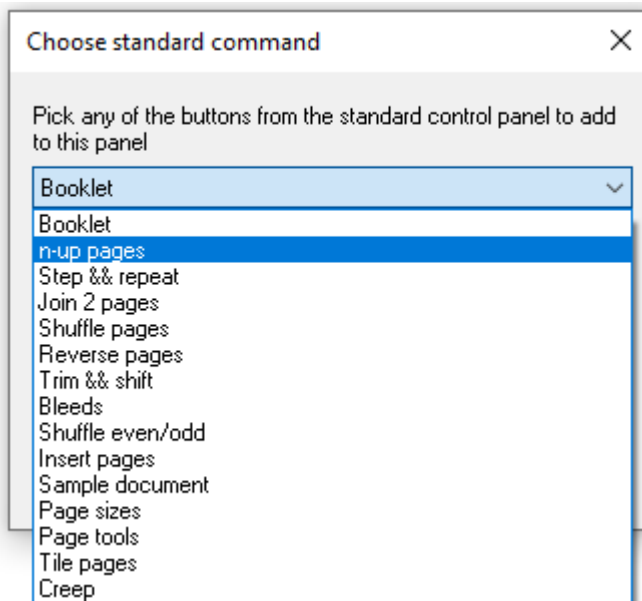
3. The new blank panel appears



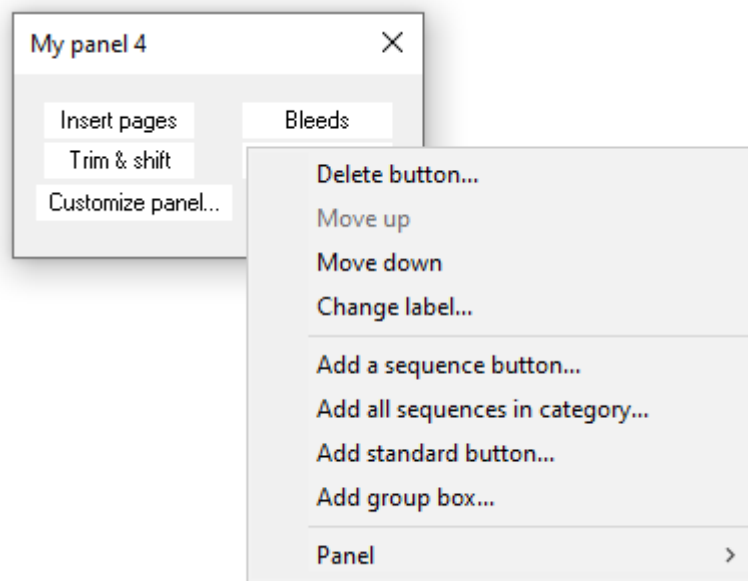
4. Right click on the panel to see the menu. Choose **Add a standard button**



5. Choose the command you want to add, for example **N-Up pages**.



6. Repeat adding commands until you have the buttons you need. To change the panel order, or labels on the buttons, right click on a button.



Now you have created the panel, you can show it any time with **Plug-ins > Quite Imposing Plus 5 > My Panels > My panel 4**. It can be left on screen while you are working, and you can have different panels for different tasks.

Advanced tip You can make Automation Sequences from your commands and choices, and put them on a panel.