

Quite Imposing Plus V6

Note: this refers to a future release 6.1. We aim to release this soon, but there is no commitment to releasing this at any particular time. Version 6.0f does contain Protected Mode support, but has not yet been translated to other languages. As always, please report any issues to help@quite.com.

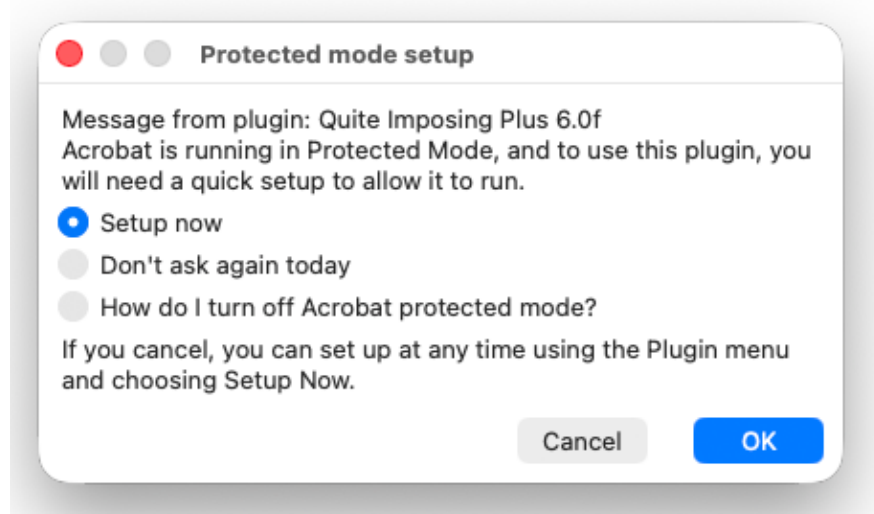
Protected Mode support (Mac)

Quite Imposing Plus 6.1 adds full support for Protected Mode in Acrobat in Mac. We would recommend you switch off Protected Mode if you are running an older version, or upgrade to 6.1. However, Adobe have said it will soon be impossible to turn off Protected Mode in Mac, and when this happens you will need to upgrade Quite Imposing Plus. If you try to use older version of Quite Imposing Plus, it may refuse to run, or you may (in older versions) have major errors such as being unable to save license information, unable to remember any settings, and unable to use automation sequences.

For several years, Acrobat has offered the option of “Protected mode” in Mac. Adobe are now using it as the default for new installs, and it may soon be impossible to turn it off. This provides protection against *unknown threats* to your computer. Because it stops Acrobat from opening many files, it can cause plug-ins to fail, including Quite Imposing Plus. Version 6.1 includes new features which allows Quite Imposing to ask you for access, while still keeping full security. In Mac jargon, Protected Mode is called a “sandbox” and many Mac apps are now required by Apple to use a sandbox.

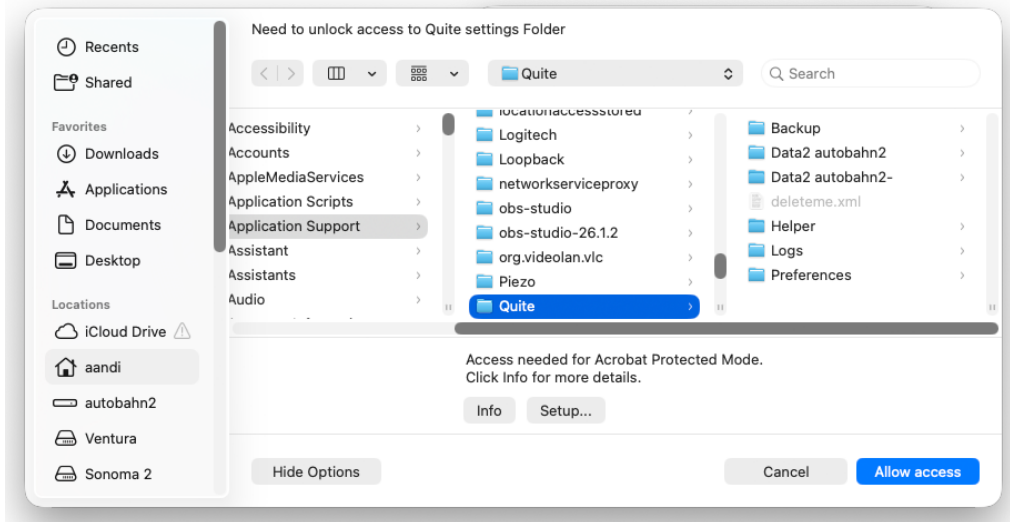
This is installed with Quite Imposing Plus, and automatically used if you switch on Protected Mode. Protected mode is controlled from Acrobat’s Preferences under Security (Enhanced). Look in the “Sandbox Protections” section for the option “Enable Protected Mode at startup”. If you do not see this, Adobe have presumably removed the option. Note that “Enhanced protection” and “Protected view” are entirely different things.

When you first run in Protected Mode, Quite Imposing Plus will set up so that you can read and write settings files, licensing information and the other things needed to run. You’ll see this message



You will normally choose Setup now. If you choose Don’t ask again today you can continue in Acrobat without Quite Imposing Plus. If you want to set up at any time, look in the menus for Plug-ins > Quite Imposing Plus > Setup now. After this you will need to restart Acrobat.

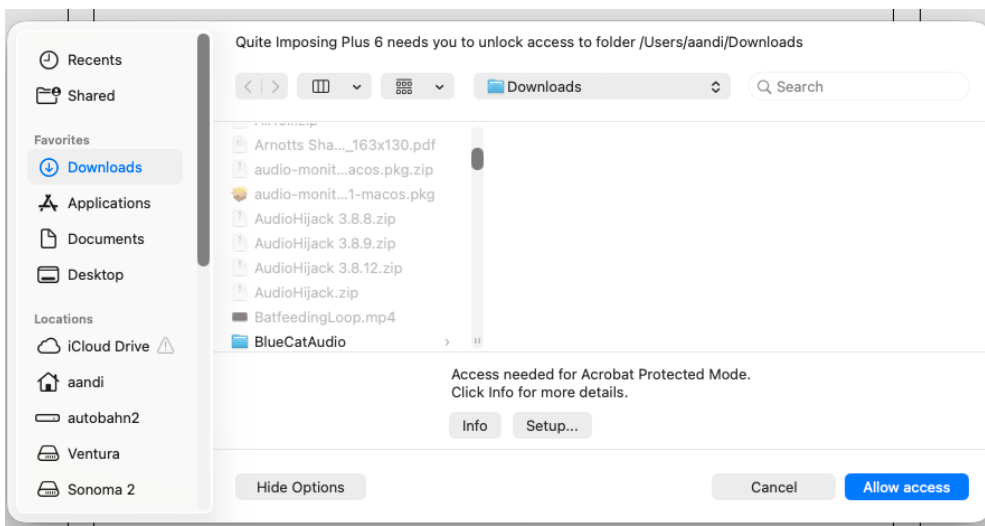
If you choose Setup now you will see a prompt very similar to an Open dialog.



You need to choose Allow access. Don't click on any different file or folder, you have to allow access to that specific Quite folder. (Prompts may vary).

It may be necessary for the plugin to run setup again, for example after some kinds of migration, after reinstalling Acrobat, and other situations. You will see the same prompts, and once you set up you can continue as before.

When you first open a file, Protected Mode is not involved. It becomes an issue when the file needs to be opened again in another Acrobat session. For example, if you want to use the same page background or data source as before. You may see a prompt like this one, very similar to the setup prompt:



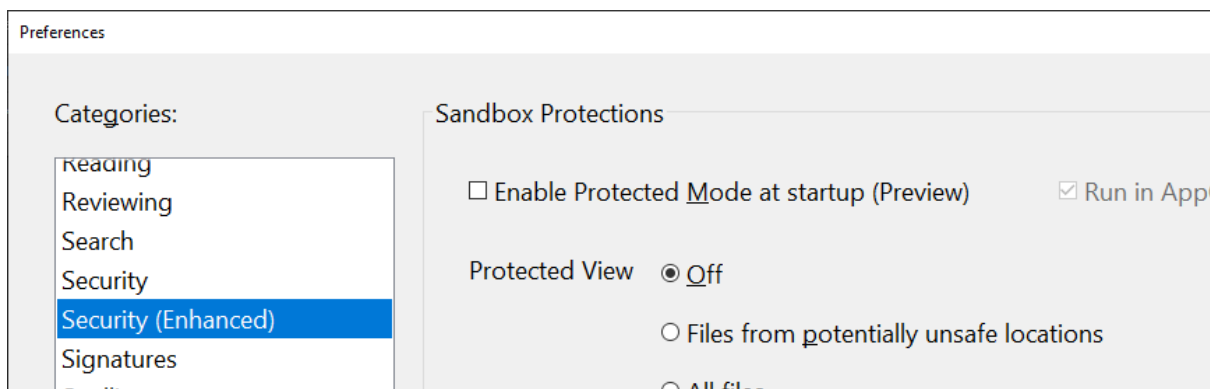
So long as you are expecting the access, you can allow it. Allow access automatically unlocks access to all files in that folder, until Acrobat is restarted. Note that Acrobat will unlock access for ALL plug-ins together, not just Quite Imposing Plus, and currently it also includes all subfolders. (Acrobat or the system might change this).

Sometimes the Mac system will add extra prompts to access files; these are not under our control.

Turning off Protected Mode

Adobe have said that it will soon be impossible to turn off protected mode. To turn off protected mode in an older version of Acrobat, please follow these steps. If you turn it off to run an old version of Quite Imposing Plus, you may want to turn it on before opening a PDF from the internet or an email.

1. Go into Acrobat Preferences, Acrobat > Preferences > General.
2. Scroll the list at the left until you find Security (Enhanced)
3. Look for the option Enable Protected Mode at Startup.
4. Make sure this option is off (not checked).



Note that “Enhanced protection” and “Protected view” are entirely different things, and if Protected Mode is not shown, then Adobe have probably removed this option.

What does Protected Mode protect?

It can be difficult to understand Protected Mode and the implications of turning it on and off. This is an Adobe feature, and Adobe may change it without notice, but here is an attempt to explain it.

- “Protected mode” is a kind of “sandbox”. Sandbox features are found in a lot of apps today, especially web browsers. Sandboxes protect against **unknown threats**.
- An “unknown threat” is a kind of attack on your computer by a computer virus or malware. That is, someone in future might try to “hack” your computer, but we don’t know how. Hackers are always finding new ways to attack.
- The aim of hackers is to get access to files and information on your computer, to either damage it or share it with the hackers.
- One type of attack is to send something to your computer that looks innocent – like a web page or a PDF file. All browsers, and Acrobat, are designed so that these innocent-looking files cannot get access to your computer anyway.
- However, in the past there have been bugs (“weaknesses”) that attackers could use to get access anyway. The bugs were fixed (if you kept up to date) but we can imagine there may be more weaknesses found in future.
- The idea of a sandbox is that, even if an attacker finds a bug, the app can’t access files on your computer anyway.
- So this is a kind of double protection. (Like locking your door AND hiding your valuables).

In Protected Mode, Acrobat only allows access to files that you have chosen to use in the current session, for example, files you chose to open. This is a big problem for plug-ins like Quite Imposing Plus, which may want to use files you chose before (such as a PDF used as a background, or a CSV data source). So, from Quite Imposing Plus 6.1 you can have the benefit of Protected Mode and still use these files, by confirming access to them.